

*HMS, Inc.*  
**HAZARD MANAGEMENT SERVICES, INC.**

4200 Rocklin Rd., Ste. 11A  
Rocklin, CA 95677-2860  
(916) 632-6800 • (916) 632-6841 Fax

---

May 7, 2004

MAY 11 2004

Mr. Kip Hansen  
Chico Unified School District  
1163 E. Seventh Street  
Chico, CA 95928

RE: Fifth Triennial AHERA Three-Year Reinspection

Dear Mr. Hansen:

Enclosed is the data obtained from the fifth AHERA three-year reinspections Hazard Management Services, Inc. (HMS, Inc.) conducted between April 14-20, 2004. The documents included with this letter are the "Three-Year Reinspection Homogeneous ACBM Material Records" covering all Elementary buildings known from the original inspection to contain ACBM. The sites enclosed are Cohasset, Loma Vista, McManus, Neal Dow, Nord, Parkview, Partridge, and Shasta Elementary Schools.

You should review the updated Homogeneous Materials Reports to familiarize yourself with the current status of asbestos containing materials and identified suspect asbestos materials. It is the District's responsibility to assure that the school's site copy of the Management Plan is up to date and consistent with the District's Management Plan for that site. This is very important and if not done can cause the District to be penalized during an EPA site visit or investigation.

HMS, Inc. wants to remind you that materials containing "trace" amounts of asbestos must be considered in the event of renovations or demolitions. Although building materials containing trace amounts of asbestos (<1%) are not regulated under EPA, Cal/OSHA does regulate work practices with materials containing 0.1% asbestos. The original AHERA inspection contains information regarding materials with trace amounts of asbestos.

When you provide your annual notification to parents and staff, include information regarding this three-year reinspection. Enclosed is a suggested format for your notification letter. Please note that you must include in your Management Plans a description of the steps you take to notify. It is also important that your Management Plans be updated after any and all actions conducted which impact asbestos containing materials.

Please remember that HMS, Inc. did not inspect new buildings or portable classrooms which were placed on the District sites since the original EPA AHERA inspection. It is the District's responsibility to obtain letters of certification from the Architect, Construction Superintendent, or manufacturer of new building materials, indicating there is no asbestos in the new buildings (constructed after October 12, 1988) or new building materials. A copy of these certification letters must be included in your management plans, both at the school site and at the LEA Designees office site. It is still required of School Districts to send a copy of these certification letters to the US EPA AHERA unit, Region IX in San Francisco.

HMS, Inc.

Mr. Kip Hansen  
Chico Unified School District  
May 7, 2004  
Page Two

It is not necessary to send a copy of the three-year reinspection to the OPSC or EPA. However, the report should be included in your Management Plan. I want to thank you for your cooperation. If you have any questions, please feel free to contact me at (916) 632-6800.

Sincerely,



John Angi  
Certified Asbestos Consultant  
CAC #03-3330

Enclosures

D:\Shannon's Doc\REINSPT\ChicoUSD\2004\00.01.Final.Ltr.wpd

RECORD OF FRIABLE AND NONFRIABLE ACM  
(FORM B)

Inspection Date(s) April 20, 2004

THREE-YEAR REINSPECTION

CDS CODE  
04-61424-6003073

SCHOOL  
Parkview Elementary School

SCHOOL PHONE NUMBER  
(530) 891-3114

ADDRESS  
1770 E. Eighth Street

(NUMBER)

(STREET)

(CITY)  
Chico, CA

(ZIP)  
95928

**-IMPORTANT-**

Each building and functional space with friable ACM or friable assumed ACM listed on this form requires completion of FORM C (PHYSICAL AND HAZARD ASSESSMENT OF FRIABLE ACM OR FRIABLE ASSUMED ACM). Indicate location of material on blueprint, diagram or narrative in square or linear feet, and attach a copy (Sec. 763.93).

LINE	BUILDING NAME & FUNCTIONAL SPACE (Indicate Address if Different From Above)	CHECK ONE			CHECK ONE			
		SUR- FACING	TSI	MISC	ACBM		ASSUMED ACM	
					FRIABLE	NON- FRIABLE	FRIABLE	NON- FRIABLE
1.	A			X				X
2.	B			X				X
3.	C			X				X
4.	D	X		X		X		X
5.	E	X		X		X		X
6.	F		X	X		X		X
7.	G		X			X		
8.	H			X		X		X
9.	HEALTHY START DISTRICT MUST CERTIFY							
10.	PORTABLE 11A & B			X				X
11.	PORTABLES 12 & 13 DISTRICT MUST CERTIFY							
12.	PORTABLES 22-25 DISTRICT MUST CERTIFY							
13.								
14.								
15.								
16.								
17.								

See attached "Homogeneous Materials Records" for all materials and their locations by building. On Form B all buildings are listed, and a summary of all non-friable and friable material is provided. Friable materials and their locations are listed separately under each building on Form B.

# THREE-YEAR REINSPECTION HOMOGENEOUS ACBM RECORDS

Date of Inspection: April 20, 2004

District: Chico Unified School District

Inspector: John Angi

School: Parkview Elementary School

Building: A

Material Class	Material	Hom. Mat. #	% Asb.	Ft <sup>2</sup> /L.F.	Location	Condition: Code & Comments	Friable Yes/No
M	12" ACT	85	ASSUMED	3,000 S	3 OFFICES, SPEECH ROOM, AND OFFICE CORRIDOR	(1) (4)	N
M	12" VFT	86	ASSUMED	3,000 S	3 OFFICES, SPEECH ROOM, AND OFFICE CORRIDOR	(1) (4)	N
M	TRANSITE PANELS	99	ASSUMED	1,000 S	BELOW WINDOWS	(1) (4)	N

## CONDITION CODE

General Condition: (1) Good (2) Damaged (3) Significantly Damaged (25% or more)  
 Change in Condition: (4) No (5) Yes (If Yes, explain under comments)  
 Abated: (6) Repaired (7) Removed (8) Encapsulated (9) Enclosed (10) Isolated & Restricted  
 Miscellaneous: (11) Inaccessible, no inspection data (12) Other (Explain under comments) (13) Non-Asbestos/Not Inspected

**CONSULT ORIGINAL AND SUPPLEMENTARY INSPECTION REPORTS FOR MATERIALS WITH TRACE AMOUNTS OF ASBESTOS**

# THREE-YEAR REINSPECTION HOMOGENEOUS ACBM RECORDS

Date of Inspection: April 20, 2004

Inspector: John Angi

Building: B

District: Chico Unified School District

School: Parkview Elementary School

Material Class	Material	Homo. Mat. #	% Asb.	Ft <sup>2</sup> /L.F.	Location	Condition: Code & Comments	Friable Yes/No
M	12" VFT	86	ASSUMED	850 S	CLASSROOMS 3-6 AND WORKROOM	(1) (4)	N
M	2' X 4' FCP	87	ASSUMED	3,200 S	CLASSROOMS 3-6 AND WORKROOM	(1) (4)	N
M	TRANSITE PANELS	99	ASSUMED	1,000 S	BELOW WINDOWS	(1) (4)	N

## CONDITION CODE

General Condition: (1) Good (2) Damaged (3) Significantly Damaged (25% or more)  
 Change in Condition: (4) No (5) Yes (If Yes, explain under comments)  
 Abated: (6) Repaired (7) Removed (8) Encapsulated (9) Enclosed (10) Isolated & Restricted  
 Miscellaneous: (11) Inaccessible, no inspection data (12) Other (Explain under comments) (13) Non-Asbestos/Not Inspected

**CONSULT ORIGINAL AND SUPPLEMENTARY INSPECTION REPORTS FOR MATERIALS WITH TRACE AMOUNTS OF ASBESTOS**

# THREE-YEAR REINSPECTION HOMOGENEOUS ACBM RECORDS

Date of Inspection: April 20, 2004

District: Chico Unified School District

Inspector: John Angi

School: Parkview Elementary School

Building: C

Material Class	Material	Hom. Mat. #	% Asb.	F <sup>2</sup> /L.F.	Location	Condition: Code & Comments	Friable Yes/No
M	DRYWALL	82	ASSUMED	800 S	MEN'S & WOMEN'S RESTROOMS	(1) (4)	N
M	12" VFT	86	ASSUMED	400 S	CLASSROOMS 7-10	(1) (4)	N
M	2' X 4' FCP	87	ASSUMED	3,600 S	CLASSROOMS 7-10	(1) (4)	N
M	TRANSITE PANELS	99	ASSUMED	1,000 S	BELOW WINDOWS	(1) (4)	N

## CONDITION CODE

General Condition: (1) Good (2) Damaged (3) Significantly Damaged (25% or more)  
 Change in Condition: (4) No (5) Yes (If Yes, explain under comments)  
 Abated: (6) Repaired (7) Removed (8) Encapsulated (9) Enclosed (10) Isolated & Restricted  
 Miscellaneous: (11) Inaccessible, no inspection data (12) Other (Explain under comments) (13) Non-Asbestos/Not Inspected

**CONSULT ORIGINAL AND SUPPLEMENTARY INSPECTION REPORTS FOR MATERIALS WITH TRACE AMOUNTS OF ASBESTOS**

# THREE-YEAR REINSPECTION HOMOGENEOUS ACBM RECORDS

Date of Inspection: April 20, 2004

District: Chico Unified School District

Inspector: John Angi

School: Parkview Elementary School

Building: D

Material Class	Material	Homo. Mat. #	% Asb.	FT <sup>2</sup> /L.F.	Location	Condition: Code & Comments	Friable Yes/No
S	PLASTER	4	1-5%	1,100 S	BOY'S & GIRL'S RESTROOM WALLS AND CUSTODIAN ROOM	(1) (4)	N
M	DRYWALL	83	ASSUMED	300 S	BOY'S & GIRL'S RESTROOM CEILING	(1) (4)	N

## CONDITION CODE

General Condition: (1) Good (2) Damaged (3) Significantly Damaged (25% or more)  
Change in Condition: (4) No (5) Yes (If Yes, explain under comments)  
Abated: (6) Repaired (7) Removed (8) Encapsulated (9) Enclosed (10) Isolated & Restricted  
Miscellaneous: (11) Inaccessible, no inspection data (12) Other (Explain under comments) (13) Non-Asbestos/Not Inspected

**CONSULT ORIGINAL AND SUPPLEMENTARY INSPECTION REPORTS FOR MATERIALS WITH TRACE AMOUNTS OF ASBESTOS**

# THREE-YEAR REINSPECTION HOMOGENEOUS ACBM RECORDS

Date of Inspection: April 20, 2004

District: Chico Unified School District

Inspector: John Angi

School: Parkview Elementary School

Building: E

Material Class	Material	Homo. Mat. #	% Asb.	Ft <sup>2</sup> /L.F.	Location	Condition: Code & Comments	Friable Yes/No
S	CEILING PLASTER	4	1-5%	50 S	STAFF ROOM	(1) (4)	N
M	12" ACT	6	NONE DETECTED	2,800 S	ENTIRE WING	(13) REPRESENTED BY SAMPLE HMS-PKV-06 COLLECTED ON 4-1-88.	N/A
M	TRANSITE PANELS	99	ASSUMED	300 S	BELOW WINDOWS	(1) (4)	N
M	LINOLEUM	100	ASSUMED	80 S	CLASSROOM 1	(1) (4)	N
M	9" VFT GREEN/WHITE	101	ASSUMED	150 S	OFFICE, HALL, AND STORAGE ROOM	(12) COULD NOT FIND THIS MATERIAL.	N
M	12" VFT	102	ASSUMED	1,500 S	CLASSROOMS 1 & 2	(1) (4)	N

## CONDITION CODE

General Condition: (1) Good (2) Damaged (3) Significantly Damaged (25% or more)  
 Change in Condition: (4) No (5) Yes (If Yes, explain under comments)  
 Abated: (6) Repaired (7) Removed (8) Encapsulated (9) Enclosed (10) Isolated & Restricted  
 Miscellaneous: (11) Inaccessible, no inspection data (12) Other (Explain under comments) (13) Non-Asbestos/Not Inspected

**CONSULT ORIGINAL AND SUPPLEMENTARY INSPECTION REPORTS FOR MATERIALS WITH TRACE AMOUNTS OF ASBESTOS**



# THREE-YEAR REINSPECTION HOMOGENEOUS ACBM RECORDS

Date of Inspection: April 20, 2004

Inspector: John Angi

Building: F

District: Chico Unified School District

School: Parkview Elementary School

Material Class	Material	Homo. Mat. #	% Asb.	F <sup>2</sup> /L.F.	Location	Condition: Code & Comments	Friable Yes/No
M	2' X 4' FCP'S	12	NONE DETECTED	4,500 S	CLASSROOMS 14-17 & LIBRARY	(13) SAMPLE HMS-PKV-12 COLLECTED ON 3-31-88.	N/A
M	9" VFT TAN	13	1-5%	5,000 S	CLASSROOMS 14-17 AND SER ROOM	(1) (4)	N
T	PIPE WRAP CORNER	15	1-5%	12 EACH	RESTROOM ATTIC	(1) (4)	N
M	DRYWALL	76	TRACE IN SKIM COAT	3,000 S	ALL ROOMS	(1) (4)	N
M	12" ACT	97	ASSUMED	250 S	SER ROOM	(1) (4)	N
M	12" VFT	100	ASSUMED	250 S	LIBRARY	(1)	N

## CONDITION CODE

General Condition: (1) Good (2) Damaged (3) Significantly Damaged (25% or more)  
 Change in Condition: (4) No (5) Yes (If Yes, explain under comments)  
 Abated: (6) Repaired (7) Removed (8) Encapsulated (9) Enclosed (10) Isolated & Restricted  
 Miscellaneous: (11) Inaccessible, no inspection data (12) Other (Explain under comments) (13) Non-Asbestos/Not Inspected

**CONSULT ORIGINAL AND SUPPLEMENTARY INSPECTION REPORTS FOR MATERIALS WITH TRACE AMOUNTS OF ASBESTOS**

D:\Shannon's Doc\REINSP\T\Chico\USD\2004\Parkview\ParkView.HMR.wpd

# THREE-YEAR REINSPECTION HOMOGENEOUS ACBM RECORDS

Date of Inspection: April 20, 2004

District: Chico Unified School District

Inspector: John Angi

School: Parkview Elementary School

Building: G

Material Class	Material	Homo. Mat. #	% Asb.	F <sup>2</sup> /L.F.	Location	Condition: Code & Comments	Friable Yes/No
M	12" VFT	16	NONE DETECTED	640 S	CLASSROOMS 18-21	(13) SAMPLE HMS-PKV-16 WAS COLLECTED ON 4-1-88.	N/A
M	2' X 4' FCP'S	17	NONE DETECTED	3,800 S	CLASSROOMS 18-21	(13) SAMPLE HMS-PKV-17 COLLECTED ON 4-1-88.	N/A
T	PIPE WRAP CORNER	18	5-10%	20 S	CLASSROOM 18	(1) (4) ABOVE FCP'S. UNABLE TO INSPECT DUE TO TESTING IN THE CLASSROOM.	N

## CONDITION CODE

General Condition: (1) Good (2) Damaged (3) Significantly Damaged (25% or more)  
 Change in Condition: (4) No (5) Yes (If Yes, explain under comments)  
 Abated: (6) Repaired (7) Removed (8) Encapsulated (9) Enclosed (10) Isolated & Restricted  
 Miscellaneous: (11) Inaccessible, no inspection data (12) Other (Explain under comments) (13) Non-Asbestos/Not Inspected

**CONSULT ORIGINAL AND SUPPLEMENTARY INSPECTION REPORTS FOR MATERIALS WITH TRACE AMOUNTS OF ASBESTOS**

D:\Shannon's Doc\REINSPT\Chico\USD\2004\Parkview\Parkview.HMR.wpd

# THREE-YEAR REINSPECTION HOMOGENEOUS ACBM RECORDS

Date of Inspection: April 20, 2004

District: Chico Unified School District

Inspector: John Angi

School: Parkview Elementary School

Building: H

Material Class	Material	Homo. Mat. #	% Asb.	FT <sup>2</sup> /L.F.	Location	Condition: Code & Comments	Friable Yes/No
S	PLASTER	3	NONE DETECTED	1,200 S	KITCHEN	(13) REPRESENTED BY SAMPLES HMS-PKV-03A-F COLLECTED ON 4-1-88.	N/A
M	12" VFT RED	9	1-5%	540 S	KITCHEN (NORTH WEST CORNER)	(1) (4)	N
M	DRYWALL	11	ASSUMED	60 S	GIRL'S & BOY'S RESTROOM	(1) (4)	N
M	12" VFT	92	ASSUMED	1,800 S	MPR, KITCHEN, AND CLOSET ON EACH END OF STAGE	(1) (4)	N
M	9" VFT	101	ASSUMED	200 S	KITCHEN STORAGE	(1)	N

## CONDITION CODE

General Condition: (1) Good (2) Damaged (3) Significantly Damaged (25% or more)  
Change in Condition: (4) No (5) Yes (If Yes, explain under comments)  
Abated: (6) Repaired (7) Removed (8) Encapsulated (9) Enclosed (10) Isolated & Restricted  
Miscellaneous: (11) Inaccessible, no inspection data (12) Other (Explain under comments) (13) Non-Asbestos/Not Inspected

**CONSULT ORIGINAL AND SUPPLEMENTARY INSPECTION REPORTS FOR MATERIALS WITH TRACE AMOUNTS OF ASBESTOS**

# THREE-YEAR REINSPECTION HOMOGENEOUS ACBM RECORDS

Date of Inspection: April 20, 2004

District: Chico Unified School District

Inspector: John Angi

School: Parkview Elementary School

Building: Portable 11A & B

Material Class	Material	Homo. Mat. #	% Asb.	Ft <sup>2</sup> /L.F.	Location	Condition: Code & Comments	Friable Yes/No
M	12" VFT	12	ASSUMED	120 S	CLASSROOMS 11A & B	(1) (4)	N
M	2' X 4' FCP'S	14	ASSUMED	900 S	CLASSROOMS 11A & B	(1) (4)	N

## CONDITION CODE

General Condition: (1) Good (2) Damaged (3) Significantly Damaged (25% or more)  
Change in Condition: (4) No (5) Yes (If Yes, explain under comments)  
Abated: (6) Repaired (7) Removed (8) Encapsulated (9) Enclosed (10) Isolated & Restricted  
Miscellaneous: (11) Inaccessible, no inspection data (12) Other (Explain under comments) (13) Non-Asbestos/Not Inspected

**CONSULT ORIGINAL AND SUPPLEMENTARY INSPECTION REPORTS FOR MATERIALS WITH TRACE AMOUNTS OF ASBESTOS**

# THREE-YEAR REINSPECTION HOMOGENEOUS ACBM RECORDS

Date of Inspection: April 20, 2004

District: Chico Unified School District

Inspector: John Angi

School: Parkview Elementary School

Building: Portables 12 & 13

Material Class	Material	Homo. Mat. #	% Asb.	F <sup>2</sup> /L.F.	Location	Condition: Code & Comments	Friable Yes/No
					PORTABLES 12 & 13	THESE TWO PORTABLES WERE NOT IN OUR ORIGINAL INSPECTION. MANUFACTURES DATE UNREADABLE. BOTH HAVE 12" VFT & 2' X 4' FCP'S. DISTRICT MUST CERTIFY IF MANUFACTURE DATES FOR THESE PORTABLES ARE PAST 10-12-88.	

## CONDITION CODE

General Condition: (1) Good (2) Damaged (3) Significantly Damaged (25% or more)  
 Change in Condition: (4) No (5) Yes (If Yes, explain under comments)  
 Abated: (6) Repaired (7) Removed (8) Encapsulated (9) Enclosed (10) Isolated & Restricted  
 Miscellaneous: (11) Inaccessible, no inspection data (12) Other (Explain under comments) (13) Non-Asbestos/Not Inspected

**CONSULT ORIGINAL AND SUPPLEMENTARY INSPECTION REPORTS FOR MATERIALS WITH TRACE AMOUNTS OF ASBESTOS**

# THREE-YEAR REINSPECTION HOMOGENEOUS ACBM RECORDS

Date of Inspection: April 20, 2004

Inspector: John Angi

Building: Portables 22-25

District: Chico Unified School District

School: Parkview Elementary School

Material Class	Material	Homo. Mat. #	% Asb.	Ft <sup>2</sup> /L.F.	Location	Condition: Code & Comments	Fiabie Yes/No
					PORTABLES 22-25	PORTABLES 22-25 REQUIRE CERTIFICATION. PORTABLE 22 MANUFACTURERS DATE 1995. PORTABLES 23-25 MANUFACTURERS DATE 1997.	

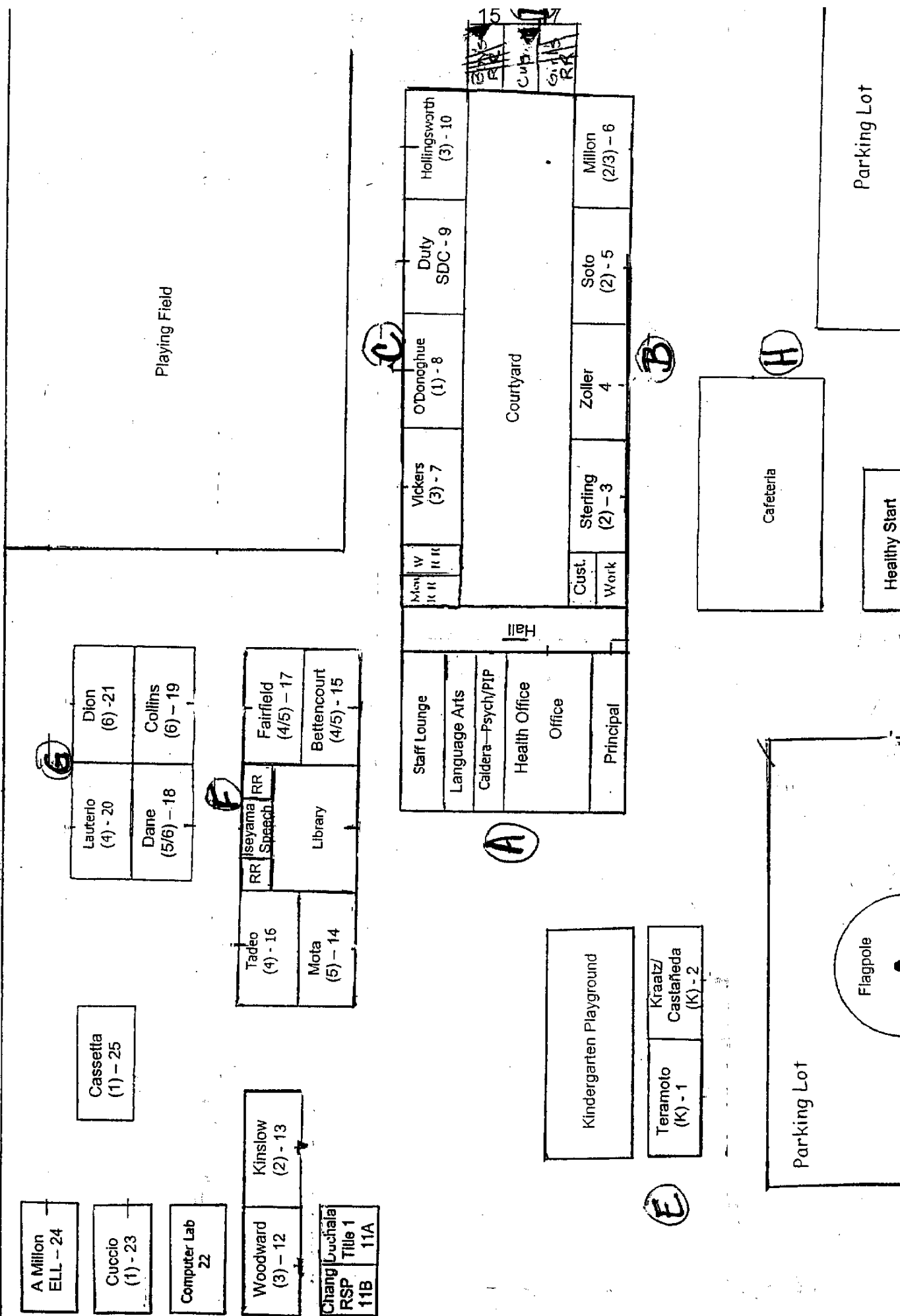
## CONDITION CODE

General Condition: (1) Good (2) Damaged (3) Significantly Damaged (25% or more)  
Change in Condition: (4) No (5) Yes (If Yes, explain under comments)  
Abated: (6) Repaired (7) Removed (8) Encapsulated (9) Enclosed (10) Isolated & Restricted  
Miscellaneous: (11) Inaccessible, no inspection data (12) Other (Explain under comments) (13) Non-Asbestos/Not Inspected

**CONSULT ORIGINAL AND SUPPLEMENTARY INSPECTION REPORTS FOR MATERIALS WITH TRACE AMOUNTS OF ASBESTOS**

## PARKVIEW MAP

342 INSTRUCTIONS  
L002/h0



State of California  
Division of Occupational Safety and Health

**Certified Asbestos Consultant**

**John A. Angi**

Name

Certification No. **03-3330**

Expires on **4/23/2005**



This certification was issued by the Division of  
Occupational Safety and Health as authorized by  
Sections 7160 et seq. of the Business and  
Professions Code



# Hazard Management Services, Inc.

*This is to confirm that*

**John A. Angi**

*has attended the eight-hour*

**AHERA Refresher Course for Asbestos Inspectors and  
Management Planners**


*and has completed the requisite training for asbestos accreditation under TSCA Title II*

**September 10, 2003**

Certificate number: 14

Valid until: September 10, 2004

Cal/OSHA approval number: CA-025-06/CA-025-08

  
Tom Wangerin, MS, CAC  
AHERA Training Director  
Hazard Management Services, Inc.  
367 Civic Drive, Suite 7  
Pleasant Hill, CA 94523-1936  
925-363-3442



# Bulk Asbestos Analysis

(EPA Method 600/R-93-116, Visual Area Estimation)

Chico Unified School Dist  
Leroy Christophersen

2455 Carmichael Drive  
Chico, CA 95928

Client ID: 2921  
Report Number: B065848  
Date Received: 10/11/04  
Date Analyzed: 10/11/04  
Date Printed: 10/11/04  
First Reported: 10/11/04

Job ID/Site: Parkview Counter - PO-050289, Corp Yard

FASI Job ID: 2921-74

Sample ID	Lab Number	Asbestos Type	Percent in Layer	Asbestos Type	Percent in Layer	Asbestos Type	Percent in Layer
SR-1	10362405						
Layer: Brown Semi-Fibrous Material			ND				
Layer: Black Fibrous Material			ND				
Layer: Brown Non-Fibrous Material			ND				
Layer: Off-White Cementitious Material			ND				

Total Composite Values of Fibrous Components: Asbestos (ND)  
Cellulose (40 %) Synthetic (5 %)  
Comment: Collected on 10/08/2004

James Flores, Laboratory Supervisor, Hayward Laboratory

Note: Limit of Quantification ('LOQ') = 1%. 'Trace' denotes the presence of asbestos below the LOQ. 'ND' = 'None Detected'.

Analytical results and reports are generated by Forensic Analytical at the request of and for the exclusive use of the person or entity (client) named on such report. Results, reports or copies of same will not be released by Forensic Analytical to any third party without prior written request from client. This report applies only to the sample(s) tested. Supporting laboratory documentation is available upon request. This report must not be reproduced except in full, unless approved by Forensic Analytical. The client is solely responsible for the use and interpretation of test results and reports requested from Forensic Analytical. This report must not be used by the client to claim product endorsement by NVLAP or any other agency of the U.S. Government. Forensic Analytical is not able to assess the degree of hazard resulting from materials analyzed. Forensic Analytical reserves the right to dispose of all samples after a period of thirty (30) days, according to all state and federal guidelines, unless otherwise specified. All samples were received in acceptable condition unless otherwise noted.



Forensic Analytical

2921-74

## Analysis Request Form

Client Name & Address:		P.O. #: 050289	Date: 10/8/10
CHICO UNIFIED SCHOOL DIST		Turn Around Time: ___ hr/ 12hr (24hr) 48 hr / ext: ___	
2455 Carmichael Drive		Due Date: 10/11/10	Due Time: End of day am/pm
Chico CA 95928		<input checked="" type="checkbox"/> PLM: <input type="checkbox"/> Standard / <input type="checkbox"/> Point Count	<input type="checkbox"/> PCM: NIOSH 7400
Contact:	Leroy A. Christophersen	<input type="checkbox"/> TEM Air: <input type="checkbox"/> AHERA / <input type="checkbox"/> Yamate2 / <input type="checkbox"/> NIOSH 7402 <input type="checkbox"/> TEM Bulk: <input type="checkbox"/> Quantitative / <input type="checkbox"/> Qualitative / <input type="checkbox"/> Chatfield <input type="checkbox"/> TEM Water: <input type="checkbox"/> Potable / <input type="checkbox"/> Non-Potable / <input type="checkbox"/> Wt % <input type="checkbox"/> TEM Microvac	
Phone #:	530-891-3195	<input type="checkbox"/> Special Project:	
Fax#:	530-891-3190 lchristo@chico.usd.org	<input type="checkbox"/> Metals Analysis: Method	
Site:	Corp Yard	Matrix: _____	
Job:	Parkview Counter	Analytes: _____	
Comments:			

Sample ID	Date/Time	Sample Location/Description	FOR AIR SAMPLES ONLY				Sample Area or Air Volume
			Type	Time On/Off	Avg. LPM	Total Time	
SR-1	8:00 AM 10/8/10	Counter Splash	A P C				
			A P C				
			A P C				
			A P C				
			A P C				
			A P C				
			A P C				
			A P C				
			A P C				
			A P C				

Sampled by: Kip Hansen		Date: 10/8/10	Time: _____
Shipped via: <input checked="" type="checkbox"/> Fed Ex <input type="checkbox"/> Airborne <input type="checkbox"/> UPS <input type="checkbox"/> US Mail <input type="checkbox"/> Courier <input type="checkbox"/> Drop Off <input type="checkbox"/> Other:			
Relinquished by:	Relinquished by:	Relinquished by:	
Date / Time:	Date / Time:	Date / Time:	
Received by: E. R. [Signature]	Received by:	Received by:	
Date / Time: 10/11/10 12:10 PM	Date / Time:	Date / Time:	
Condition Acceptable? <input checked="" type="checkbox"/> Yes <input type="checkbox"/> No	Condition Acceptable? <input type="checkbox"/> Yes <input type="checkbox"/> No	Condition Acceptable? <input type="checkbox"/> Yes <input type="checkbox"/> No	

San Francisco Office: 3777 Depot Road, Suite 409, Hayward, California 94545 / Telephone: (510)887-8828 (800)827-FASI / Fax: (510)887-4218  
 Los Angeles Office: 2959 Pacific Commerce Drive, Rancho Dominguez, California 90221 / Telephone: (310)763-2374 / Fax: (310)763-8684  
 Portland Office: 17400 SW Upper Boones Ferry Road, Suite 245, Durham, Oregon 97224 / Telephone: (503)595-1001 (877)410-1888 / Fax: (503)595-1006  
 Las Vegas Office: 3900 Paradise Road, Suite 181, Las Vegas, Nevada 89109 / Telephone: (702)784-0040 / Fax: (702)784-0030